

Silflake® 450

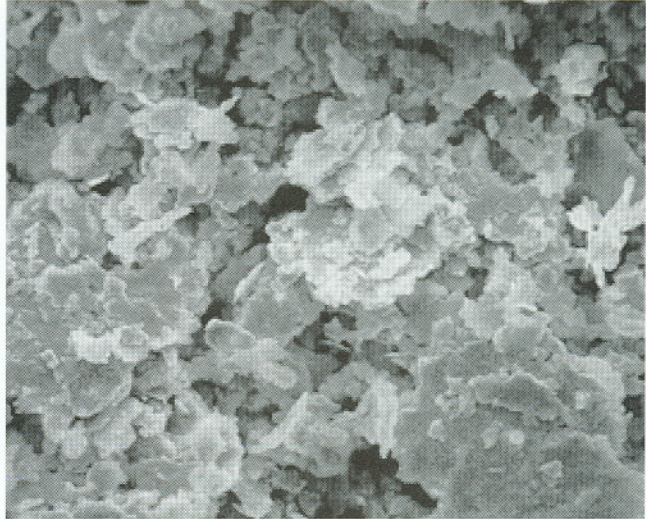
ENGINEERED POWDERS DIVISION

DESCRIPTION

Silflakes are mechanically flattened silver powders. Each Silflake has special physical and chemical properties to satisfy a wide range of applications. The physical and chemical properties are given in the accompanying tables.

GENERAL APPLICATIONS

Silflake 450 has been developed for use in conductive inks, conductive epoxies, conductive coating applications and termination materials.



SEM Photomicrograph (1500x magnification)

5 μ m

PHYSICAL PROPERTIES

| | |
|---|---------------|
| Product: | SF 450 |
| Apparent Density (g/in ³) (1) | 18 - 28 |
| Tap Density (g/cm ³) (2) | 1.8 - 3.0 |
| Wt. loss @ 110°C (%max) @ 538°C | 0.1 0.9 |
| Specific Surface Area (m ² /g) (3) | 0.6 - 1.2 |

CHEMICAL COMPOSITION (wt%)

| | | |
|--------------|--------------|------------|
| Cu 0.01 max | Pb 0.005 max | |
| Ni 0.005 | Na 0.02 max | K 0.02 max |
| Cl 0.005 max | Fe 0.02 max | |

(1) Per ASTM B329-81

(2) Per ASTM B527-81

(3) Quantachrome Monosorb B.E.T. Method



TECHNIC INC
ENGINEERED POWDERS DIVISION

300 Park East Drive, Woonsocket, RI 02895
(401) 769-7000 Fax (401) 769-2472

Warranty Clause

Technic Inc. believes the information contained herein to be reliable. However, the technical information is given by Technic Inc. without charge and the user shall employ such information at its own discretion and risk. Technic Inc. assumes no responsibility for results obtained or damages incurred from the use of such information in whole or in part.